

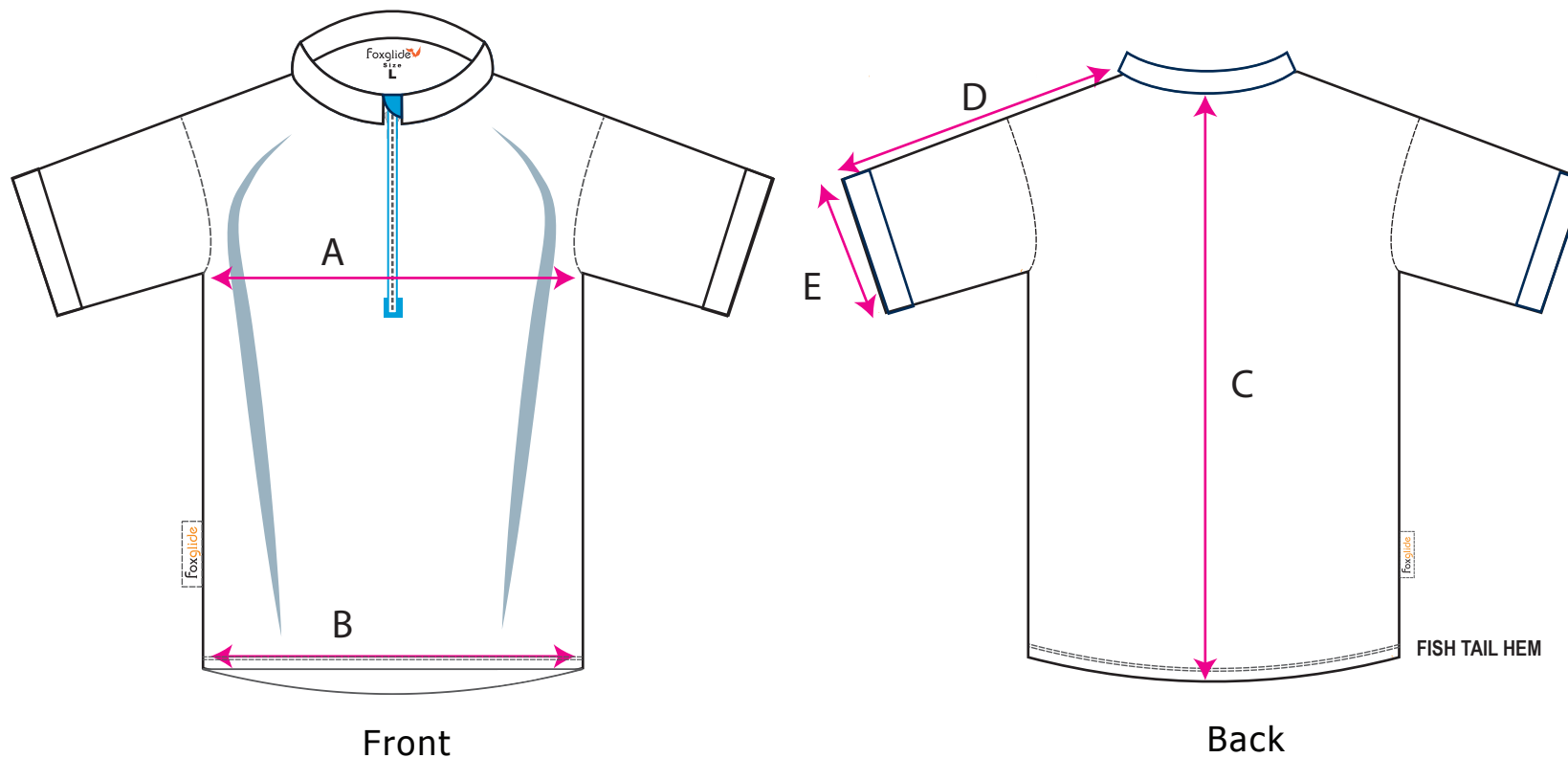
GARMENT SPECIFICATION



CURLING - MENS DESIGN A1

OCTOBER 2012

UPDATED MARCH 2013



measurements in cm

	S	M	L	XL	2XL	3XL	4XL		
A - Chest Half Circumference	51.5	54	56	58	60	62	64.5		
B - Hem - Half Circumference	50	52.5	54.5	56	58	60	62.5		
C - Centre Back length	74	76	77	78.	79	80	83		
D- Sleeve length upper	35	37	38	39	40	41	42.5		
E - Sleeve open half Circumference	18	19	19.5	20	21	22	23.5		

Tolerance +/- 1.0 cm